

Forest Biomass Markets and Utilization in Northern Arizona

Tabi Bolton, Area Supervisor



Campbell Global

a J.P.Morgan company

Agenda

1. Presentation in 2 slides
2. Utilization and Value
3. Future Demand
4. Q & A

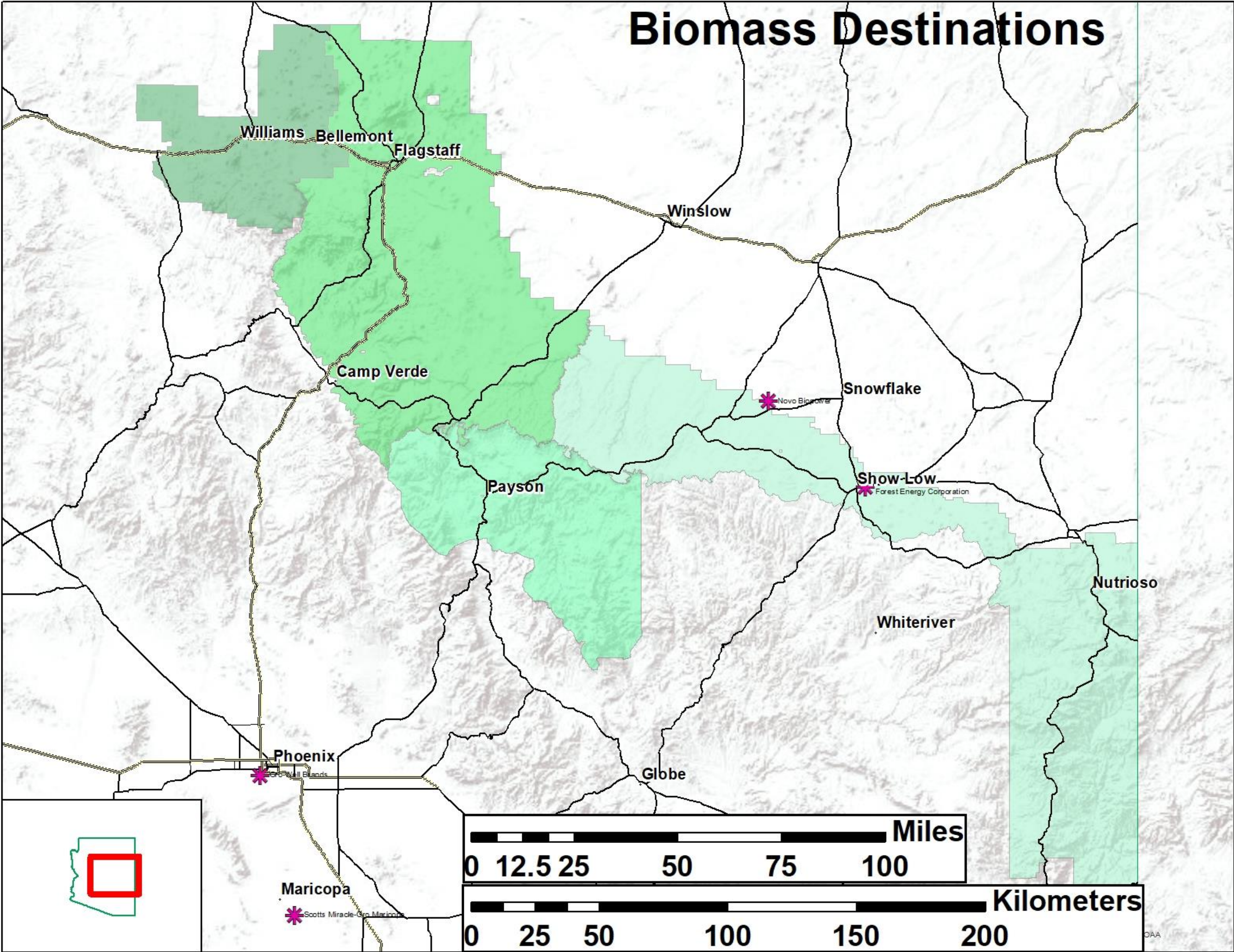




Presentation in 2 Slides

Presentation in 2 Slides

Slide 1 of 2



Presentation in 2 Slides

Slide 2 of 2



Presentation in 2 Slides

Slide 3 of 2



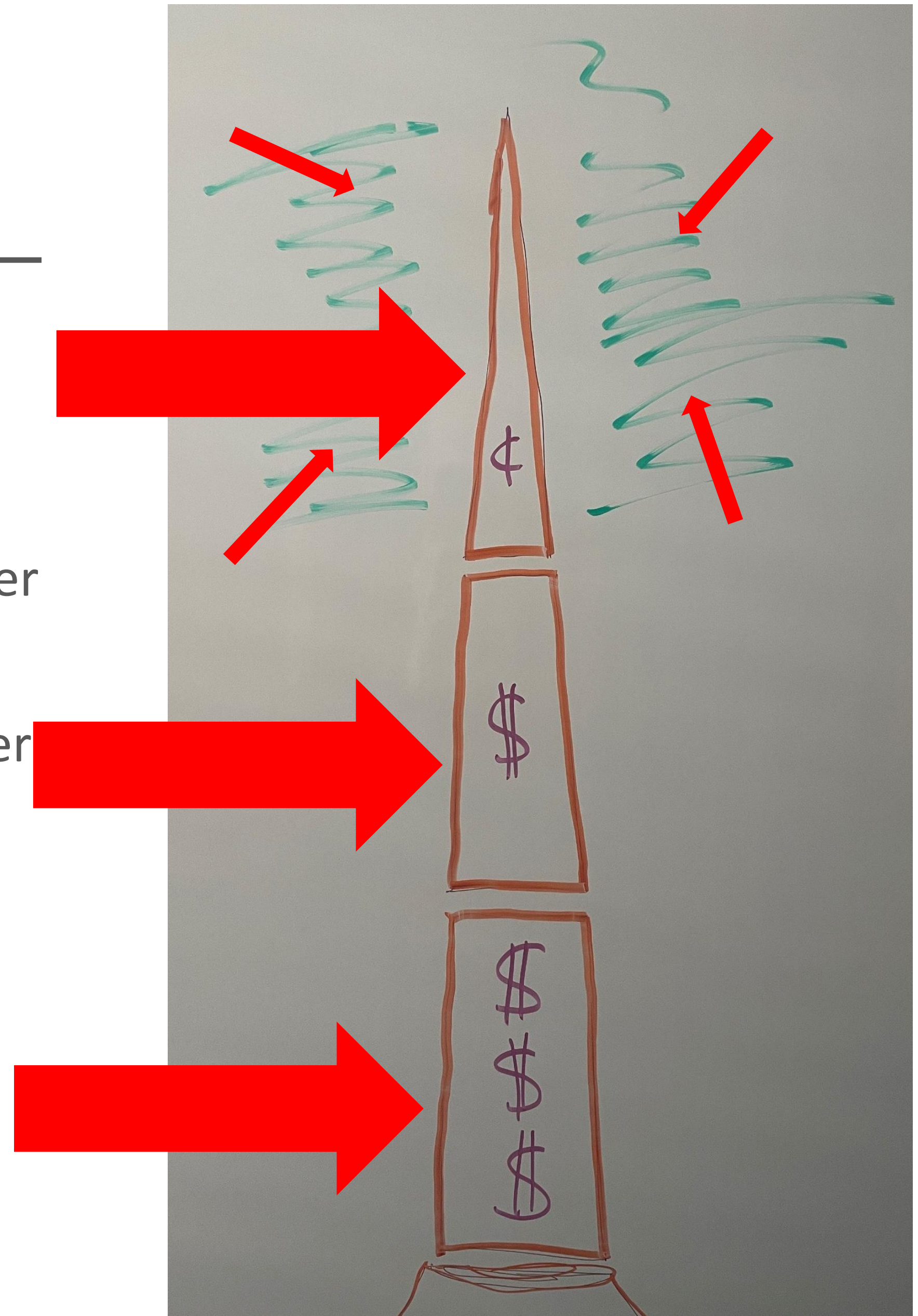


Utilization and Value

Utilization and Value

Classic Model

- Large logs have the most value \$\$\$
- Intermediate logs have some value \$
- Top wood often is “subsidized” by larger material
- Biomass remains onsite or leaves if there are markets nearby



Utilization and Value

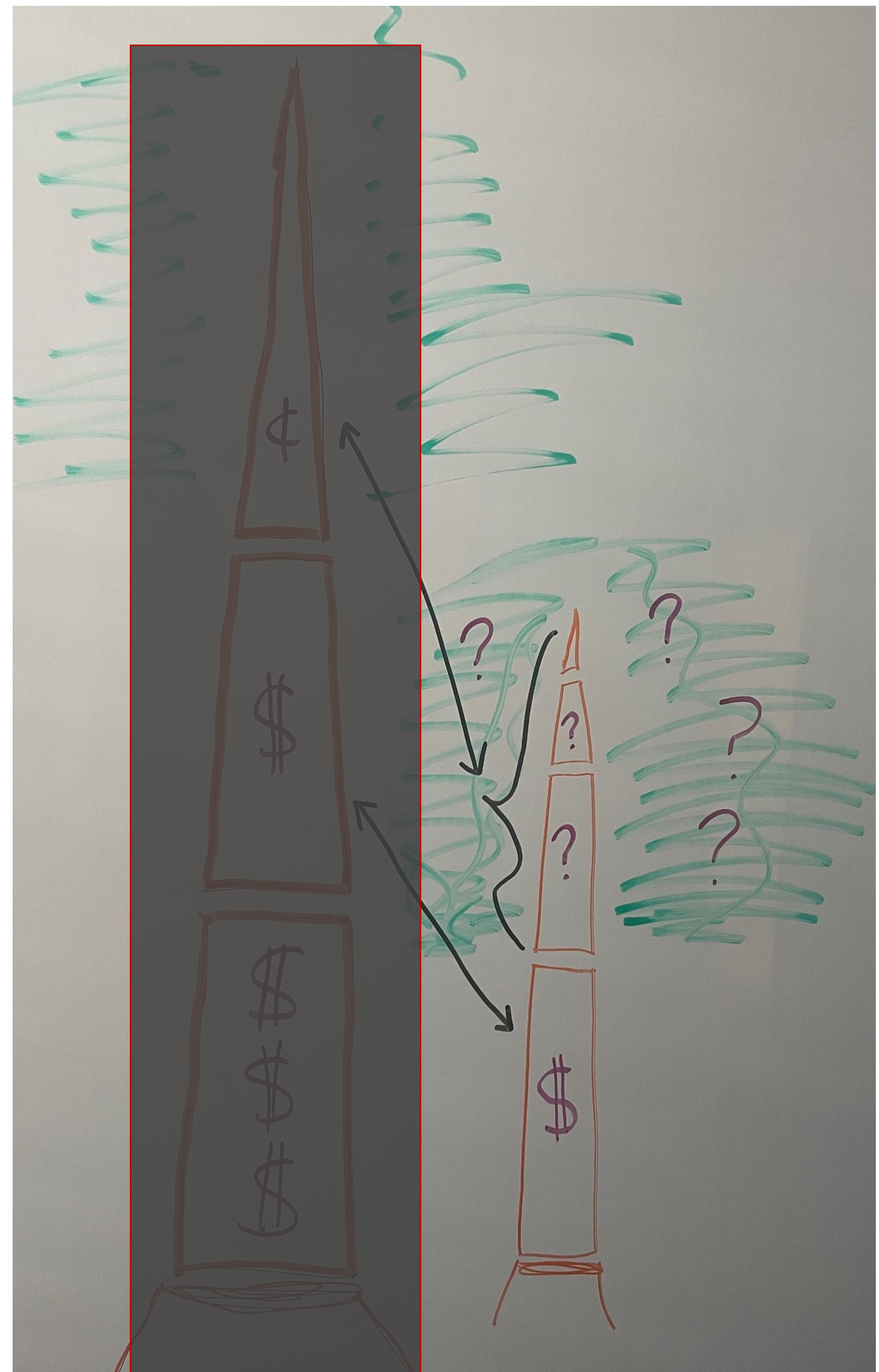
Landings



Utilization and Value

Arizona Model

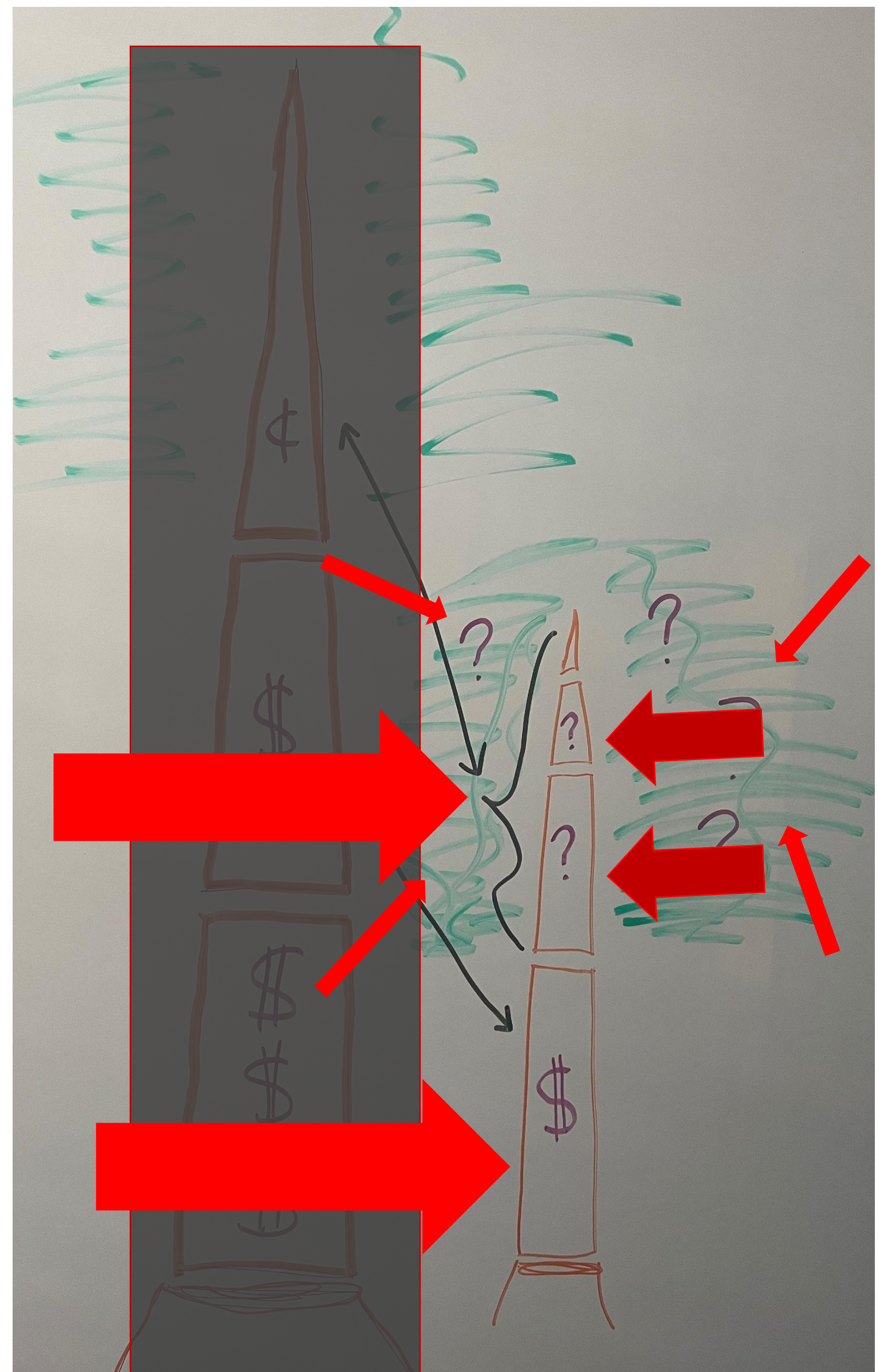
- We don't cut any "big" trees >24"
- Large logs are not move valuable



Utilization and Value

Arizona Model

- We don't cut any "big" trees >24"
- Large logs are not move valuable
- Intermediate logs have some value \$ and are preferred by local mills
- Top wood needs to be removed to meet Forest Service Specs
- Biomass moves as money allows
 - Often subsidized with real dollars
 - Firewood markets can be strong



Utilization and Value

What are we producing

- Pallets
- Pellets
- Firewood
- Landscape Material
- Biopower



VIGORO®
VIGORO® 2 cu. ft. Colored Mulch

5 FOR \$10.00

SPECIAL BUY

May 18th - May 29th 2023



Utilization and Value

What are we producing with Biomass

- Pellets
- Firewood
- Landscape Material
- Biopower

Utilization and Value

What are we producing with Biomass

- Erosion control



Utilization and Value

What are we producing with Biomass

- Erosion control
- Geotextiles





Future Demand

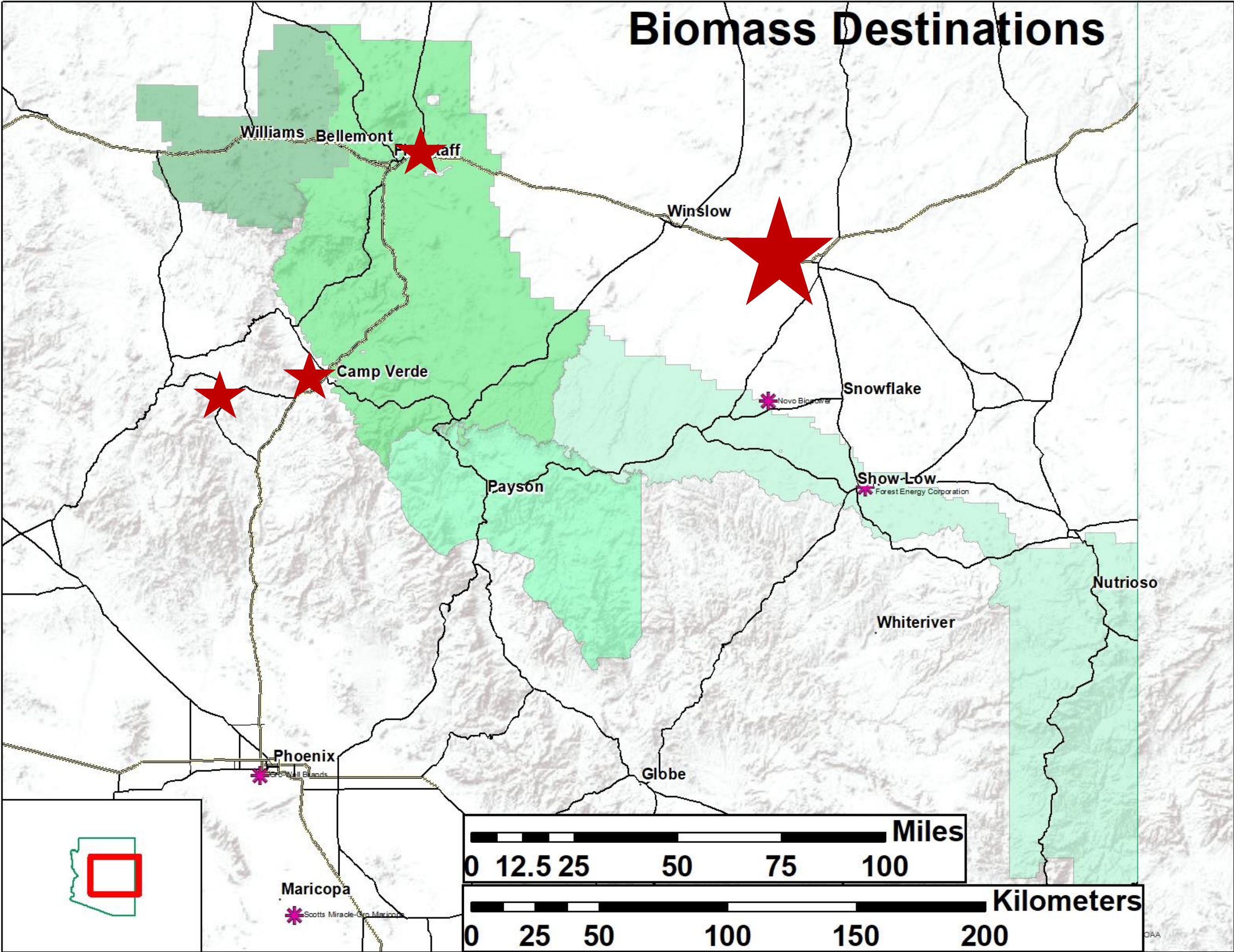
Future Demand

External Markets



Future Demand

Internal Markets



Questions

